



# WRITING CONTESTS

## AWARDS, CONTESTS, and GRANTS

 Visit [www.GFWC.org/membership/club-manual/](http://www.GFWC.org/membership/club-manual/) for updates and more information.

### EXPRESS YOURSELF CREATIVELY

The GFWC Writing Contests seek to provide an avenue for GFWC members and community youth to freely express themselves and draw upon their experiences through writing. These submissions illustrate the talent of GFWC members and are a reflection of our communities. GFWC offers short story and poetry contests for members and youth in the communities GFWC serves.

### GFWC MEMBER CONTESTS

- Authors must be dues-paying members of an active GFWC club.
- Entries must be typed, double-spaced, printed on one side only, with minimum margins of one-inch on all four sides, on 8.5 x 11-inch paper.
- Entries must be written during the contest year (January 1-December 31).
- Entries must have the following on the top right hand corner of each page:
  - Author's name, email address, mailing address, and phone number
  - Name of author's GFWC club and state federation
  - Category
  - Title of work
- Authors must be amateurs; earnings from writing may not exceed \$500 annually.
- Entries may not have been published prior to the competition and must be original works by the author.
- A **signed GFWC Creative Arts Waiver** must be included with each submission.
- Short stories are limited to 2,000 words.
- Poetry entries can be any style, with a minimum length of eight lines and a maximum of 50 lines.
- One entry per member per category.



### 2016-2018 WRITING CONTESTS

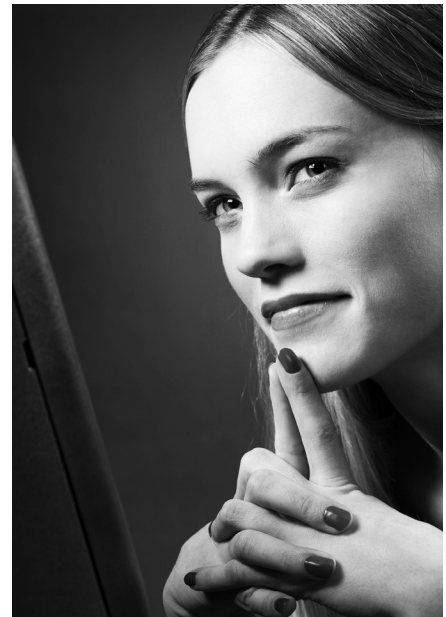
**Mary Kaye Ernest, Chairman**

3318 West River Drive

Mequon, WI 53097

262-377-6118

[mkernest@wi.rr.com](mailto:mkernest@wi.rr.com)



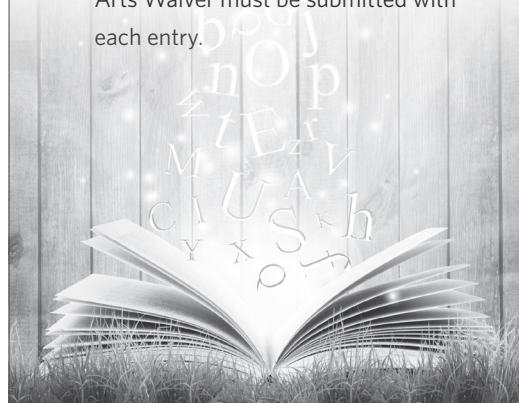
## **YOUTH WRITING CONTESTS**

- Entries must be typed, double-spaced, printed on one side only, with minimum margins of one-inch on all four sides, on 8.5 x 11-inch paper.
- Entries must be written during the contest year (January 1-December 31).
- Entries must have the following on the top right hand corner of each page:
  - Author's name, email address, mailing address, and phone number
  - Name of the GFWC club and state federation submitting author's work
  - Category
  - Title of work
  - Grade Level Category
    - Category 1:** Grades K, 1, and 2
    - Category 2:** Grades 3, 4, and 5
    - Category 3:** Grades 6, 7, and 8
    - Category 4:** Grades 9, 10, 11, and 12
- Authors must be amateurs; earnings from writing may not exceed \$500 annually.
- Entries may not have been published prior to the competition and must be original works by the authors.
- A **signed GFWC Creative Arts Waiver** must be included with each submission.
- One entry person per person per category.
- Short stories are limited to 2,000 words.
- Poetry entries can be any style, with a minimum length of eight lines and a maximum of 50 lines.
- The Six Traits of Writing will be used in the judging of the Youth Writing Contest.



## **CLARIFICATIONS AND FREQUENTLY ASKED QUESTIONS**

- Manuscripts will not be returned. Authors should keep a copy.
- By submitting your short story or poem to GFWC, you are providing GFWC with royalty-free perpetual license to use, reproduce, post, display, create derivative works, sell, license the work in any media known or later invented without limitation, for commercial or non-commercial purposes.
- A completed and signed GFWC Creative Arts Waiver must be submitted with each entry.



## **ENTRY GUIDELINES AND DEADLINES**

### STATE LEVEL

- Clubs must send entries to their respective State Writing Contests Chairman for state-level judging.
- State entry deadlines are determined by the respective State Federation.
- State Writing Contest Chairmen shall select judges, who will evaluate submissions and select a first place winning entry in each category.
- State Writing Contest Chairmen should keep in mind the national deadline when arranging for state-level judging.

### NATIONAL LEVEL

- One winning state entry per writing contest, per category, must be sent to the national GFWC Writing Contest Chairman, postmarked no later than April 1 each year.
- All entries must be accompanied by a cover letter from each State GFWC Creative Writing Contest Chairman with a complete list of state writing contest winners.
- All entries may be mailed or electronically sent to the GFWC Writing Contest Chairman.